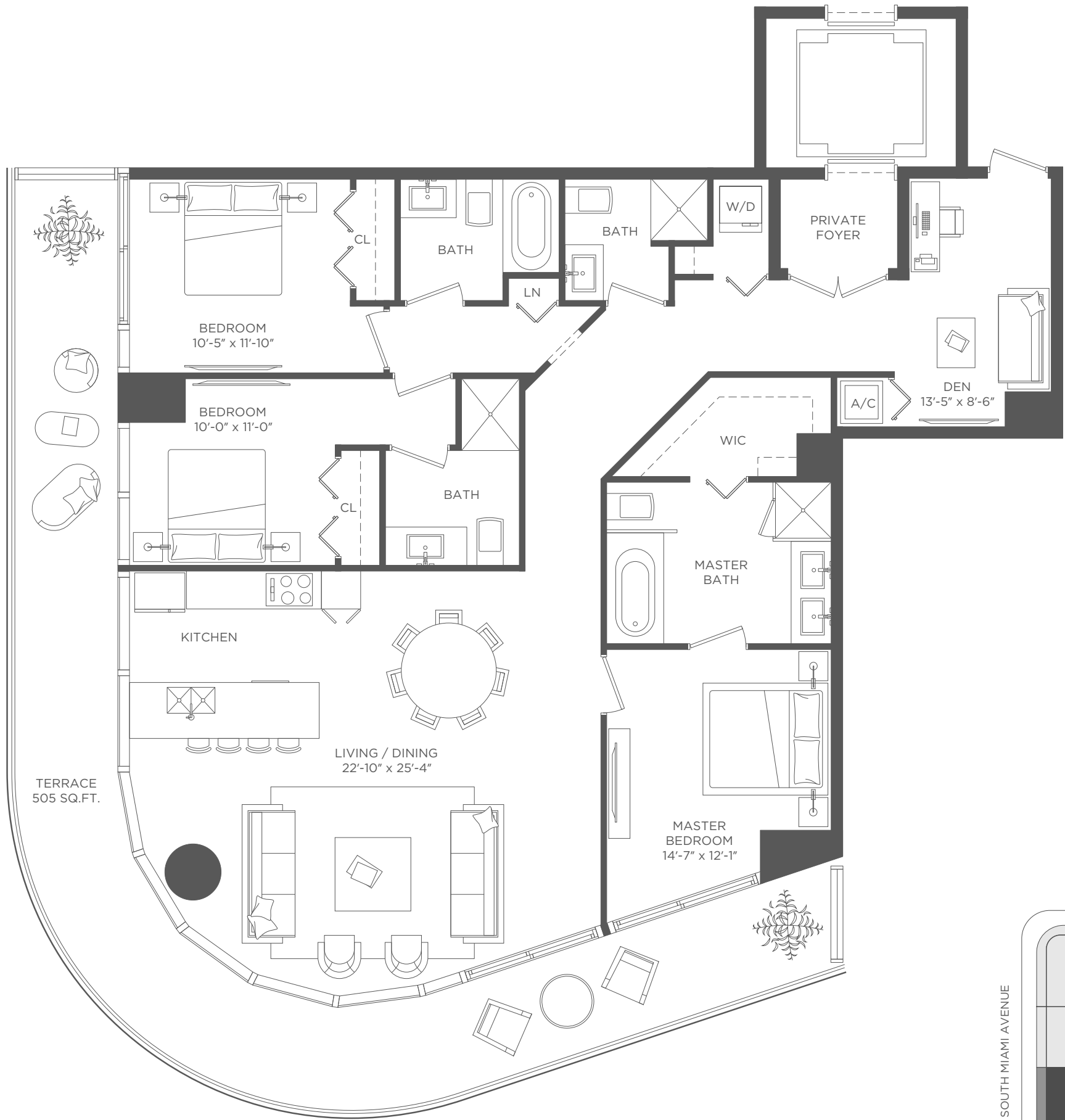




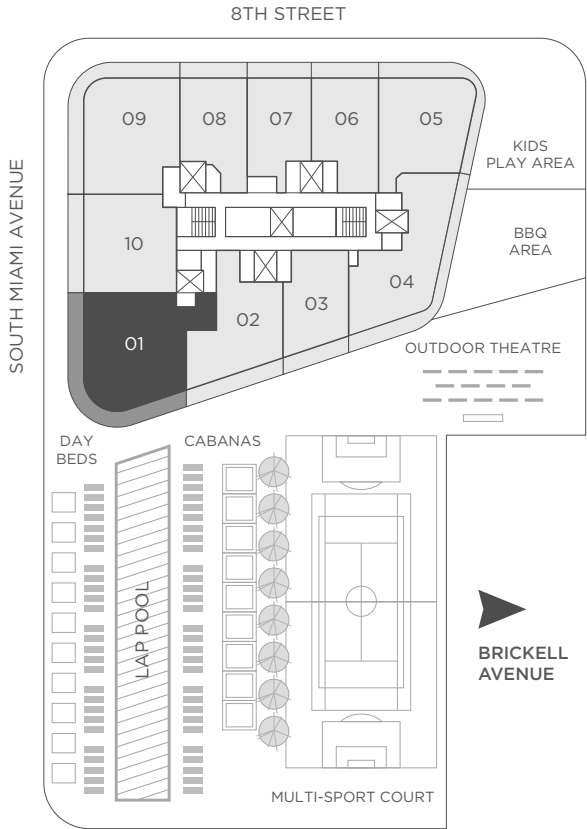
SLS LUX®  
BRICKELL



## SLS RESIDENCE 01

3 BEDROOMS & DEN / 4 BATHS

A/C INTERIOR AREA	1,779 SQ. FT.	165.27 SQ. M.
TERRACE AREA	505 SQ. FT.	46.91 SQ. M.
TOTAL RESIDENCE	2,284 SQ. FT.	212.18 SQ. M.



Each purchaser is advised that there are various methods for calculating the square footage of a Unit, and that depending on the method of calculation , the quoted square footage of a Unit in advertising materials may vary from the square footage of a Unit as stated or described in the Prospectus and the Declaration. The dimensions of the Unit shown in these floor plans have been calculated from the exterior boundaries of the exterior walls to the centerline of interior demising walls, including common elements such as structural walls and other interior structural components of the building and in fact vary from the dimensions that would be determined by using the description and definition of the "Unit" set forth in the Prospectus and the Declaration. For your reference, the area of the Unit, determined in accordance with Unit boundaries as defined in the Prospectus and the Declaration is less than the square footage reflected here. The configuration and use of space or the floor plan design may vary from that in the Prospectus and Declaration because the Developer has reserved the right in the Prospectus to make design, dimension, specification, and plan changes at any time, in the Developer's discretion, without notice to Unit buyers. Note that measurements of rooms set forth on this floor plan are generally taken at the greatest points of each given room (as if the room were a perfect rectangle), without regard for any cutouts. Accordingly, the area of the actual room will typically be smaller than the product obtained by multiplying the stated length times width. All dimensions are approximate and may vary with actual construction, and all floor plans and development plans are subject to change. The furnishings and décor illustrated are not included with the purchase of the Unit. See Prospectus for additional information regarding what is offered with the Unit and the calculation of Unit square footage and dimensions.



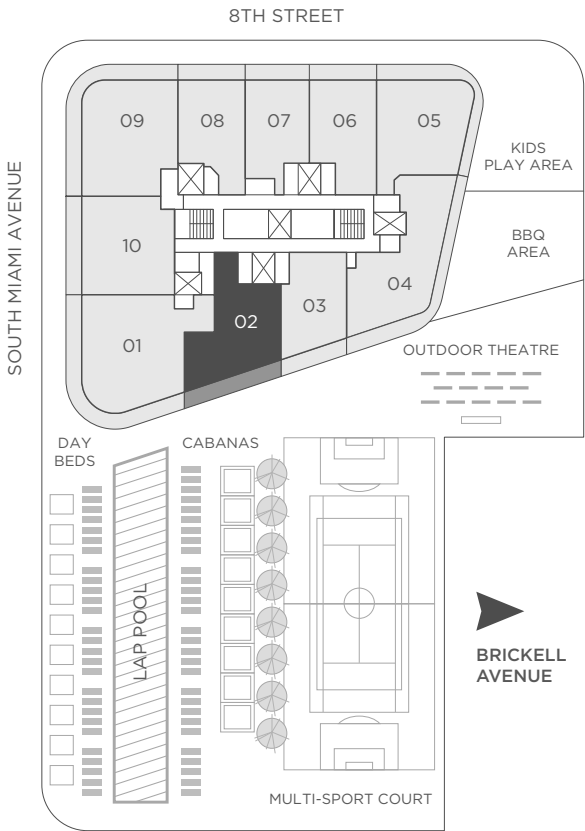
SLS LUX®  
BRICKELL



SLS RESIDENCE 02  
2 BEDROOMS & DEN / 2 1/2 BATHS

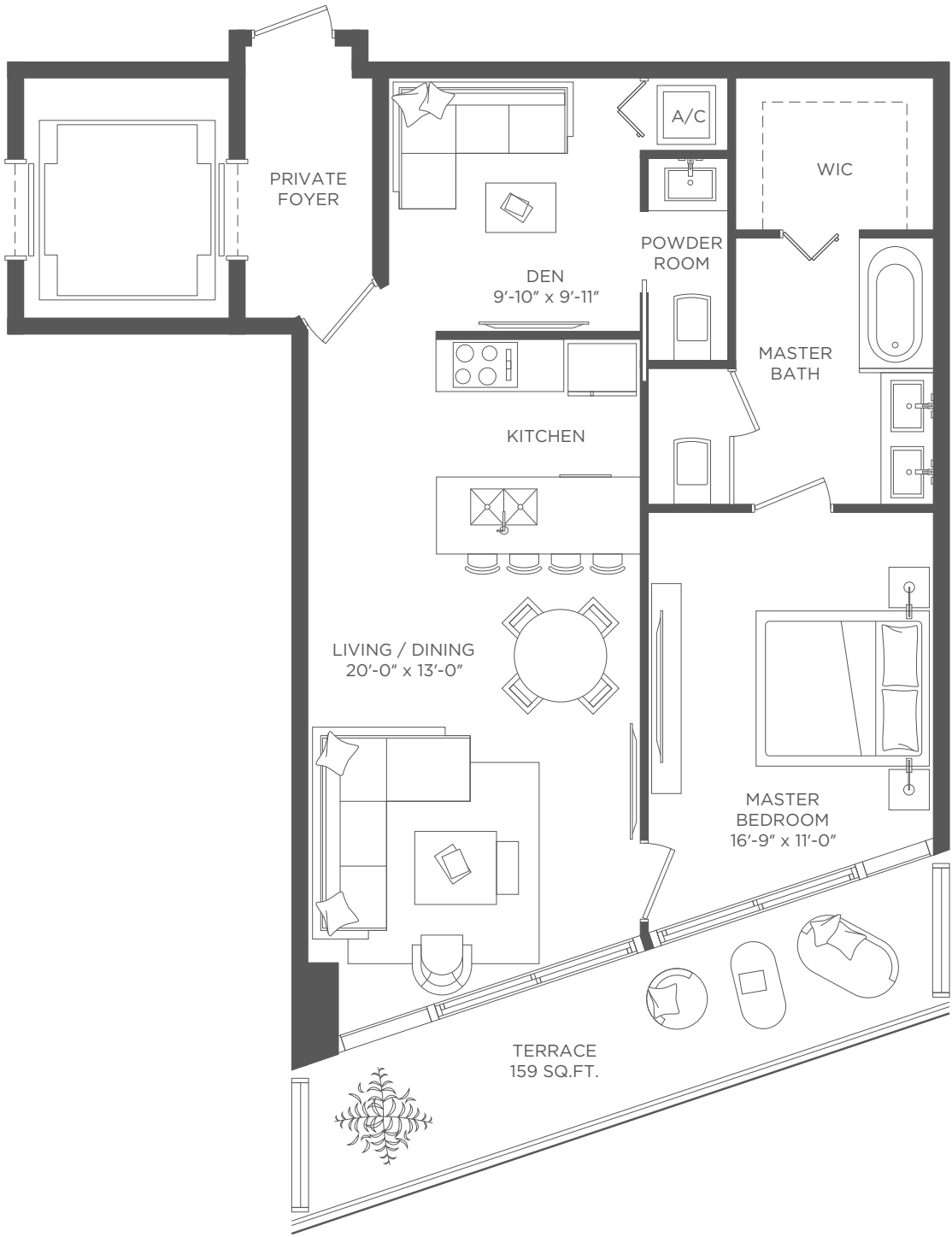
A/C INTERIOR AREA	1,250 SQ. FT.	116.12 SQ. M.
TERRACE AREA	234 SQ. FT.	21.73 SQ. M.
TOTAL RESIDENCE	1,484 SQ. FT.	137.85 SQ. M.

Each purchaser is advised that there are various methods for calculating the square footage of a Unit, and that depending on the method of calculation , the quoted square footage of a Unit in advertising materials may vary from the square footage of a Unit as stated or described in the Prospectus and the Declaration. The dimensions of the Unit shown in these floor plans have been calculated from the exterior boundaries of the exterior walls to the centerline of interior demising walls, including common elements such as structural walls and other interior structural components of the building and in fact vary from the dimensions that would be determined by using the description and definition of the "Unit" set forth in the Prospectus and the Declaration. For your reference, the area of the Unit, determined in accordance with Unit boundaries as defined in the Prospectus and the Declaration is less than the square footage reflected here. The configuration and use of space or the floor plan design may vary from that in the Prospectus and Declaration because the Developer has reserved the right in the Prospectus to make design, dimension, specification, and plan changes at any time, in the Developer's discretion, without notice to Unit buyers. Note that measurements of rooms set forth on this floor plan are generally taken at the greatest points of each given room (as if the room were a perfect rectangle), without regard for any cutouts. Accordingly, the area of the actual room will typically be smaller than the product obtained by multiplying the stated length times width. All dimensions are approximate and may vary with actual construction, and all floor plans and development plans are subject to change. The furnishings and décor illustrated are not included with the purchase of the Unit. See Prospectus for additional information regarding what is offered with the Unit and the calculation of Unit square footage and dimensions.





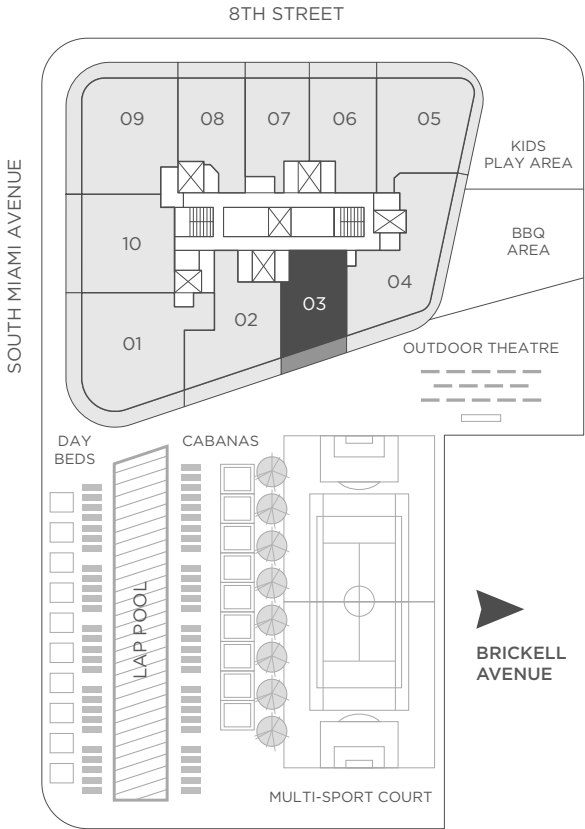
SLS LUX®  
BRICKELL



SLS RESIDENCE 03  
1 BEDROOM & DEN / 1 1/2 BATHS

A/C INTERIOR AREA	945 SQ. FT.	87.79 SQ. M.
TERRACE AREA	159 SQ. FT.	14.77 SQ. M.
TOTAL RESIDENCE	1,104 SQ. FT.	102.56 SQ. M.

Each purchaser is advised that there are various methods for calculating the square footage of a Unit, and that depending on the method of calculation , the quoted square footage of a Unit in advertising materials may vary from the square footage of a Unit as stated or described in the Prospectus and the Declaration. The dimensions of the Unit shown in these floor plans have been calculated from the exterior boundaries of the exterior walls to the centerline of interior demising walls, including common elements such as structural walls and other interior structural components of the building and in fact vary from the dimensions that would be determined by using the description and definition of the "Unit" set forth in the Prospectus and the Declaration. For your reference, the area of the Unit, determined in accordance with Unit boundaries as defined in the Prospectus and the Declaration is less than the square footage reflected here. The configuration and use of space or the floor plan design may vary from that in the Prospectus and Declaration because the Developer has reserved the right in the Prospectus to make design, dimension, specification, and plan changes at any time, in the Developer's discretion, without notice to Unit buyers. Note that measurements of rooms set forth on this floor plan are generally taken at the greatest points of each given room (as if the room were a perfect rectangle), without regard for any cutouts. Accordingly, the area of the actual room will typically be smaller than the product obtained by multiplying the stated length times width. All dimensions are approximate and may vary with actual construction, and all floor plans and development plans are subject to change. The furnishings and décor illustrated are not included with the purchase of the Unit. See Prospectus for additional information regarding what is offered with the Unit and the calculation of Unit square footage and dimensions.



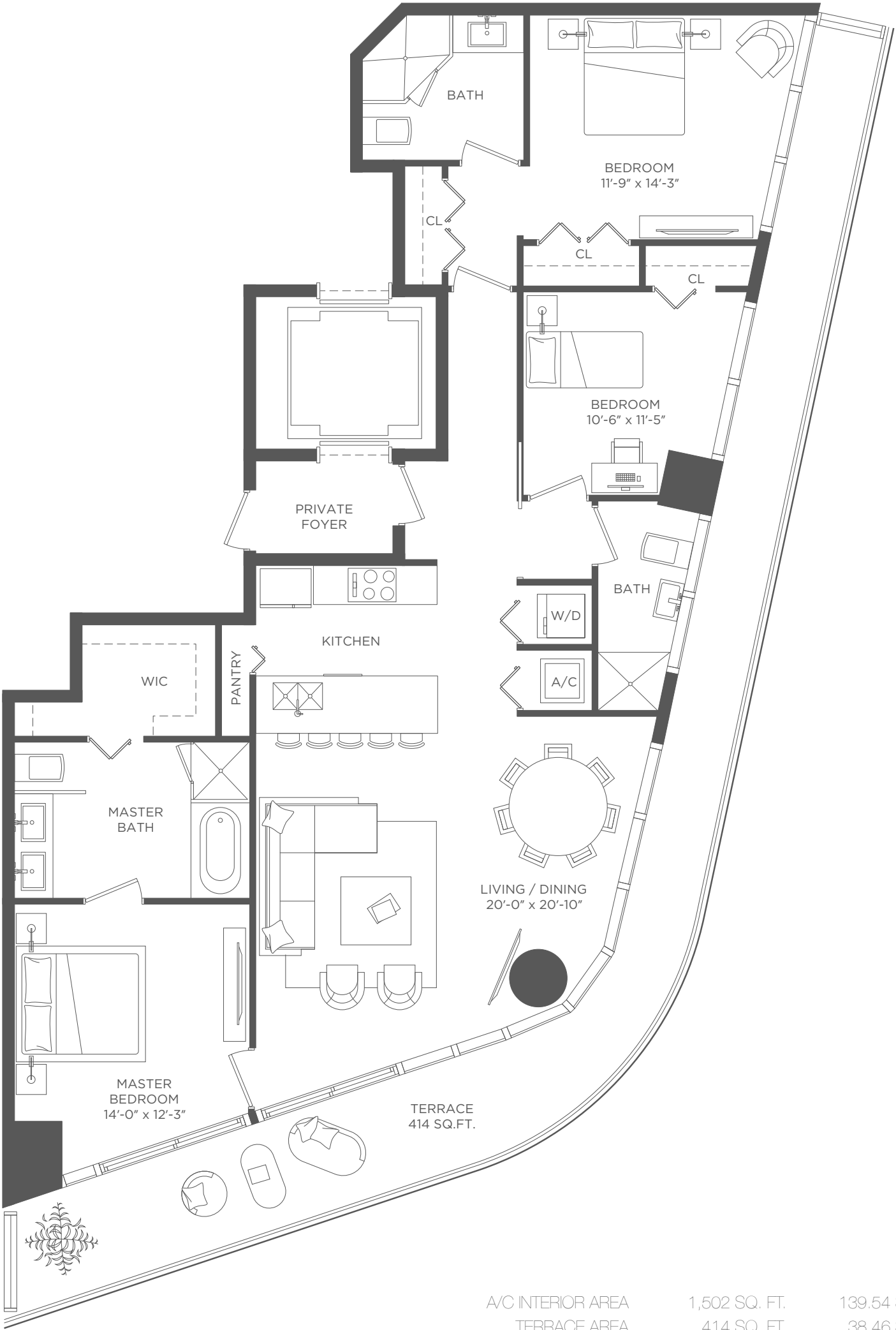


SLS LUX®  
BRICKELL

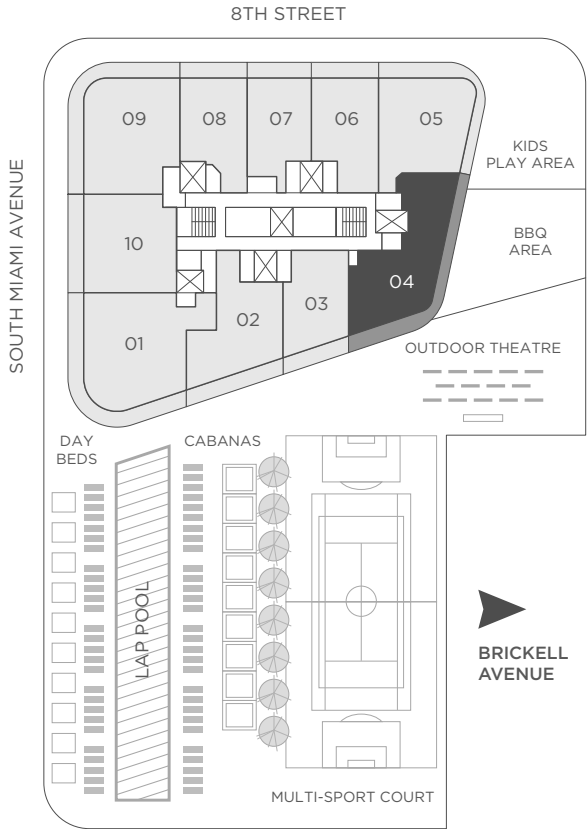
## SLS RESIDENCE 04

3 BEDROOMS / 3 BATHS

Each purchaser is advised that there are various methods for calculating the square footage of a Unit, and that depending on the method of calculation , the quoted square footage of a Unit in advertising materials may vary from the square footage of a Unit as stated or described in the Prospectus and the Declaration. The dimensions of the Unit shown in these floor plans have been calculated from the exterior boundaries of the exterior walls to the centerline of interior demising walls, including common elements such as structural walls and other interior structural components of the building and in fact vary from the dimensions that would be determined by using the description and definition of the "Unit" set forth in the Prospectus and the Declaration. For your reference, the area of the Unit, determined in accordance with Unit boundaries as defined in the Prospectus and the Declaration is less than the square footage reflected here. The configuration and use of space or the floor plan design may vary from that in the Prospectus and Declaration because the Developer has reserved the right in the Prospectus to make design, dimension, specification, and plan changes at any time, in the Developer's discretion, without notice to Unit buyers. Note that measurements of rooms set forth on this floor plan are generally taken at the greatest points of each given room (as if the room were a perfect rectangle), without regard for any cutouts. Accordingly, the area of the actual room will typically be smaller than the product obtained by multiplying the stated length times width. All dimensions are approximate and may vary with actual construction, and all floor plans and development plans are subject to change. The furnishings and décor illustrated are not included with the purchase of the Unit. See Prospectus for additional information regarding what is offered with the Unit and the calculation of Unit square footage and dimensions.

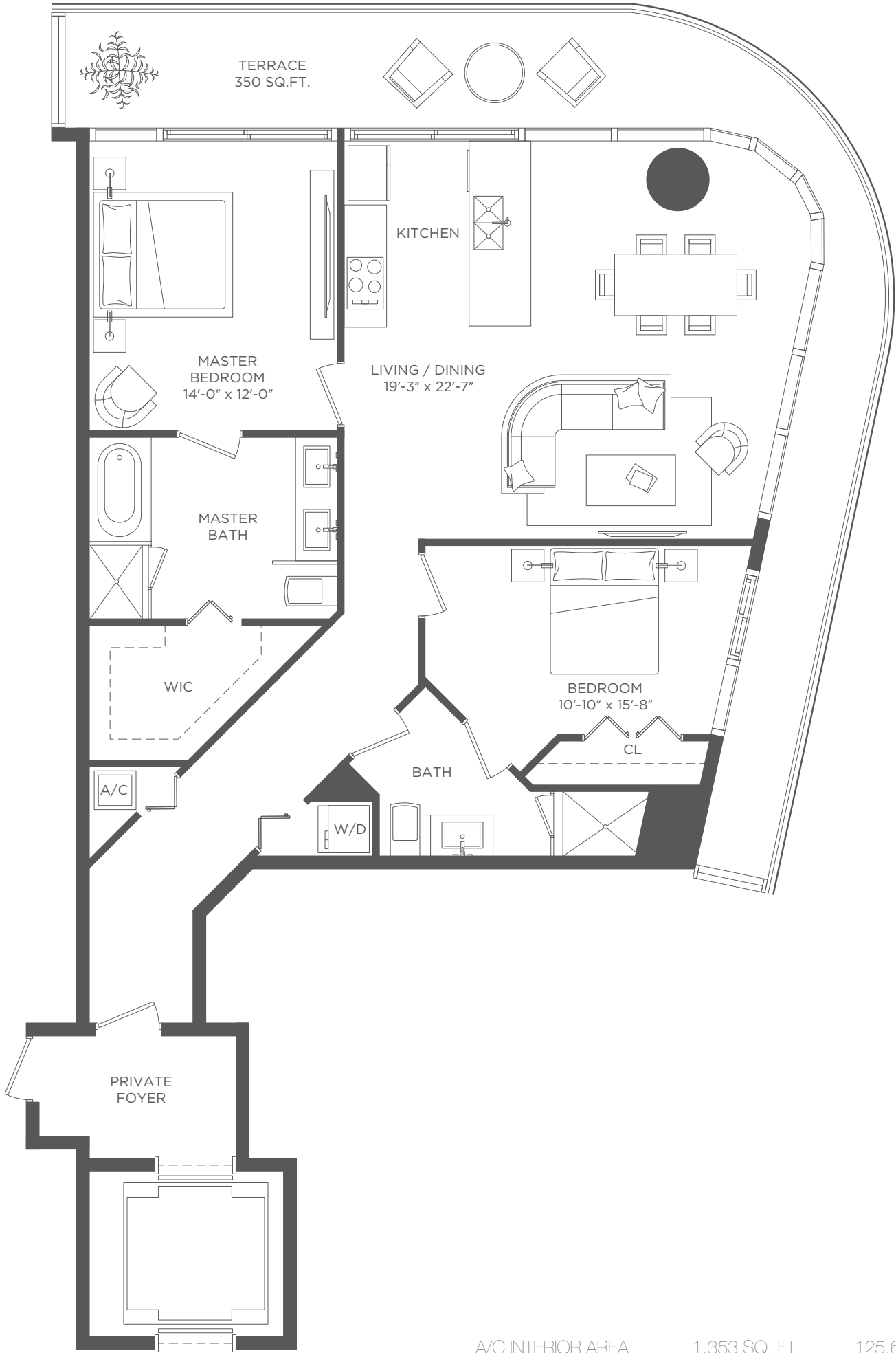


A/C INTERIOR AREA	1,502 SQ. FT.	139.54 SQ. M.
TERRACE AREA	414 SQ. FT.	38.46 SQ. M.
<b>TOTAL RESIDENCE</b>	<b>1,916 SQ. FT.</b>	<b>178 SQ. M.</b>





SLS LUX®  
BRICKELL

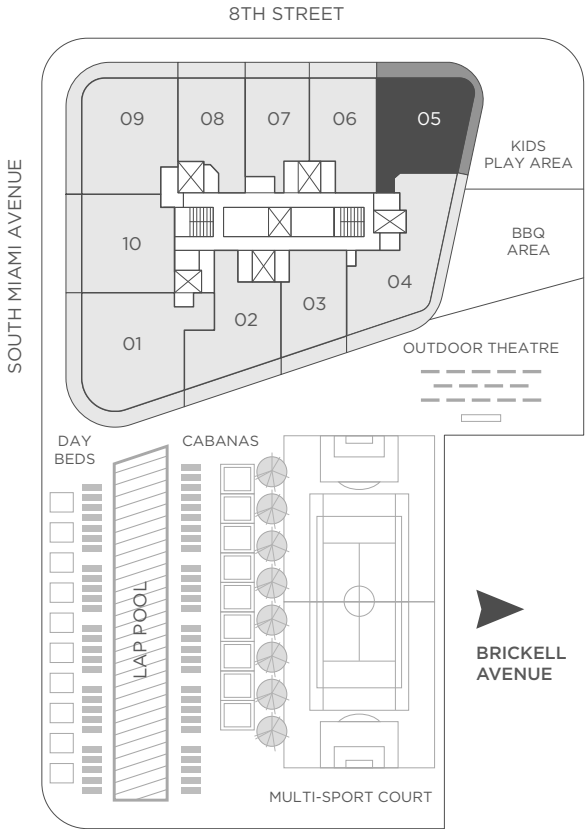


## SLS RESIDENCE 05

2 BEDROOMS / 2 BATHS

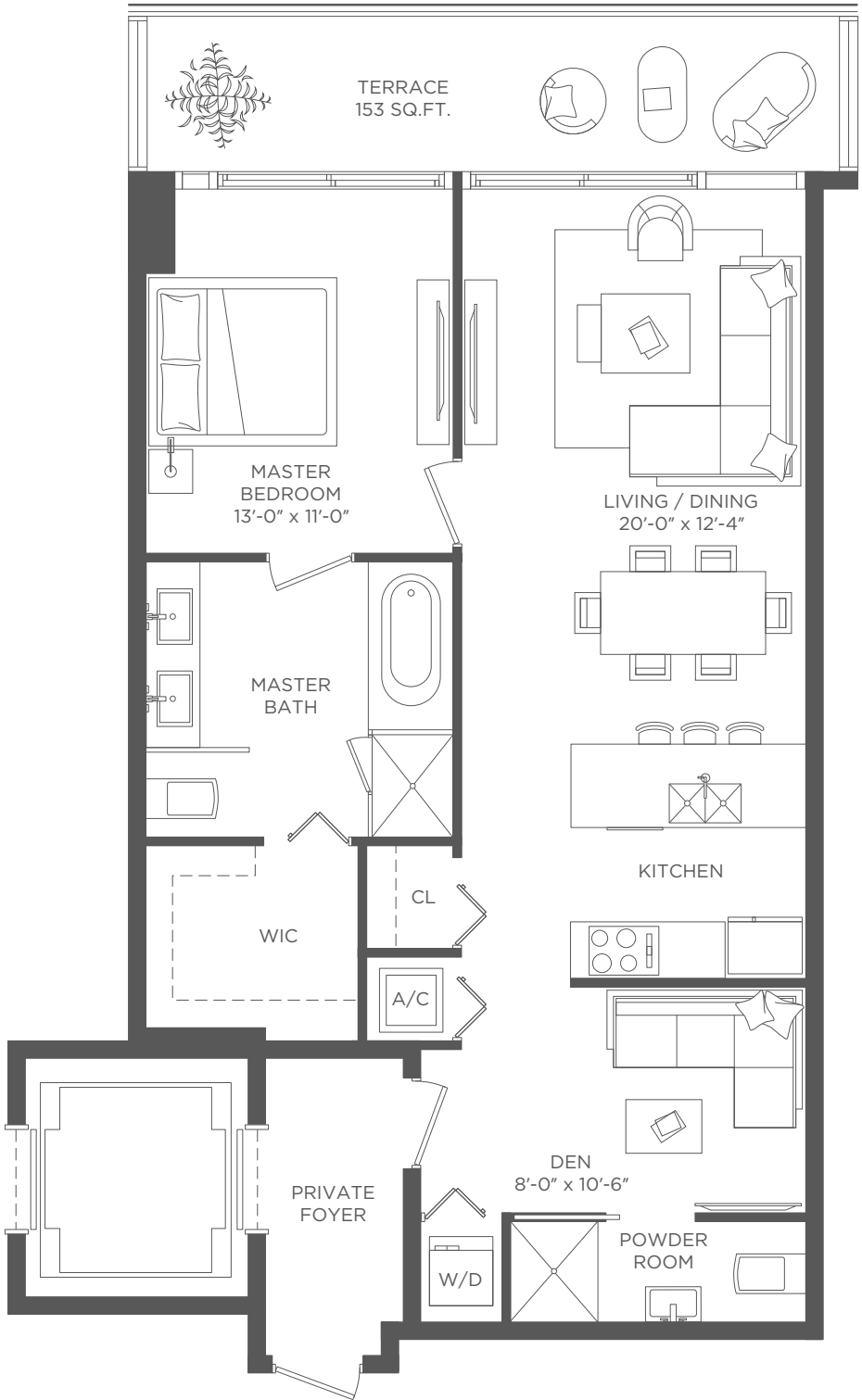
Each purchaser is advised that there are various methods for calculating the square footage of a Unit, and that depending on the method of calculation , the quoted square footage of a Unit in advertising materials may vary from the square footage of a Unit as stated or described in the Prospectus and the Declaration. The dimensions of the Unit shown in these floor plans have been calculated from the exterior boundaries of the exterior walls to the centerline of interior demising walls, including common elements such as structural walls and other interior structural components of the building and in fact vary from the dimensions that would be determined by using the description and definition of the "Unit" set forth in the Prospectus and the Declaration. For your reference, the area of the Unit, determined in accordance with Unit boundaries as defined in the Prospectus and the Declaration is less than the square footage reflected here. The configuration and use of space or the floor plan design may vary from that in the Prospectus and Declaration because the Developer has reserved the right in the Prospectus to make design, dimension, specification, and plan changes at any time, in the Developer's discretion, without notice to Unit buyers. Note that measurements of rooms set forth on this floor plan are generally taken at the greatest points of each given room (as if the room were a perfect rectangle), without regard for any cutouts. Accordingly, the area of the actual room will typically be smaller than the product obtained by multiplying the stated length times width. All dimensions are approximate and may vary with actual construction, and all floor plans and development plans are subject to change. The furnishings and décor illustrated are not included with the purchase of the Unit. See Prospectus for additional information regarding what is offered with the Unit and the calculation of Unit square footage and dimensions.

A/C INTERIOR AREA	1,353 SQ. FT.	125.69 SQ. M.
TERRACE AREA	350 SQ. FT.	32.51 SQ. M.
TOTAL RESIDENCE	1,703 SQ. FT.	158.20 SQ. M.





SLS LUX®  
BRICKELL

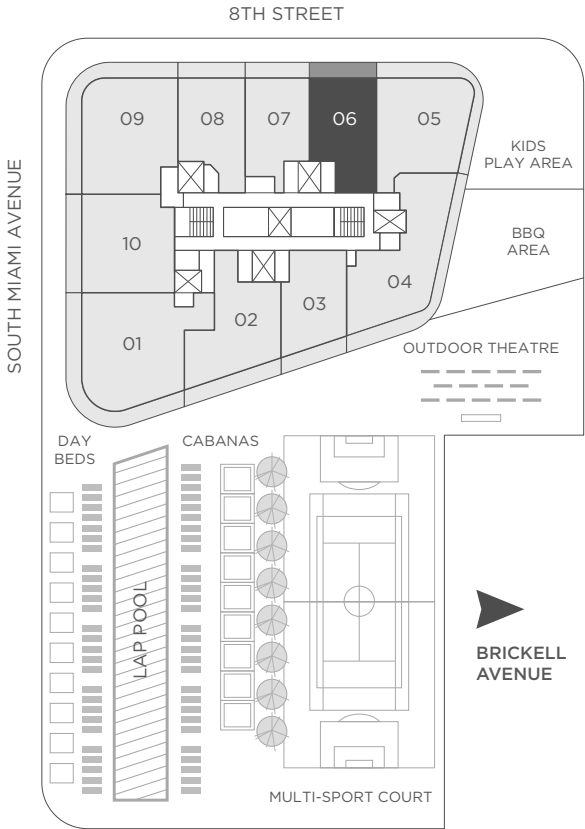


SLS RESIDENCE 06

1 BEDROOM & DEN / 2 BATHS

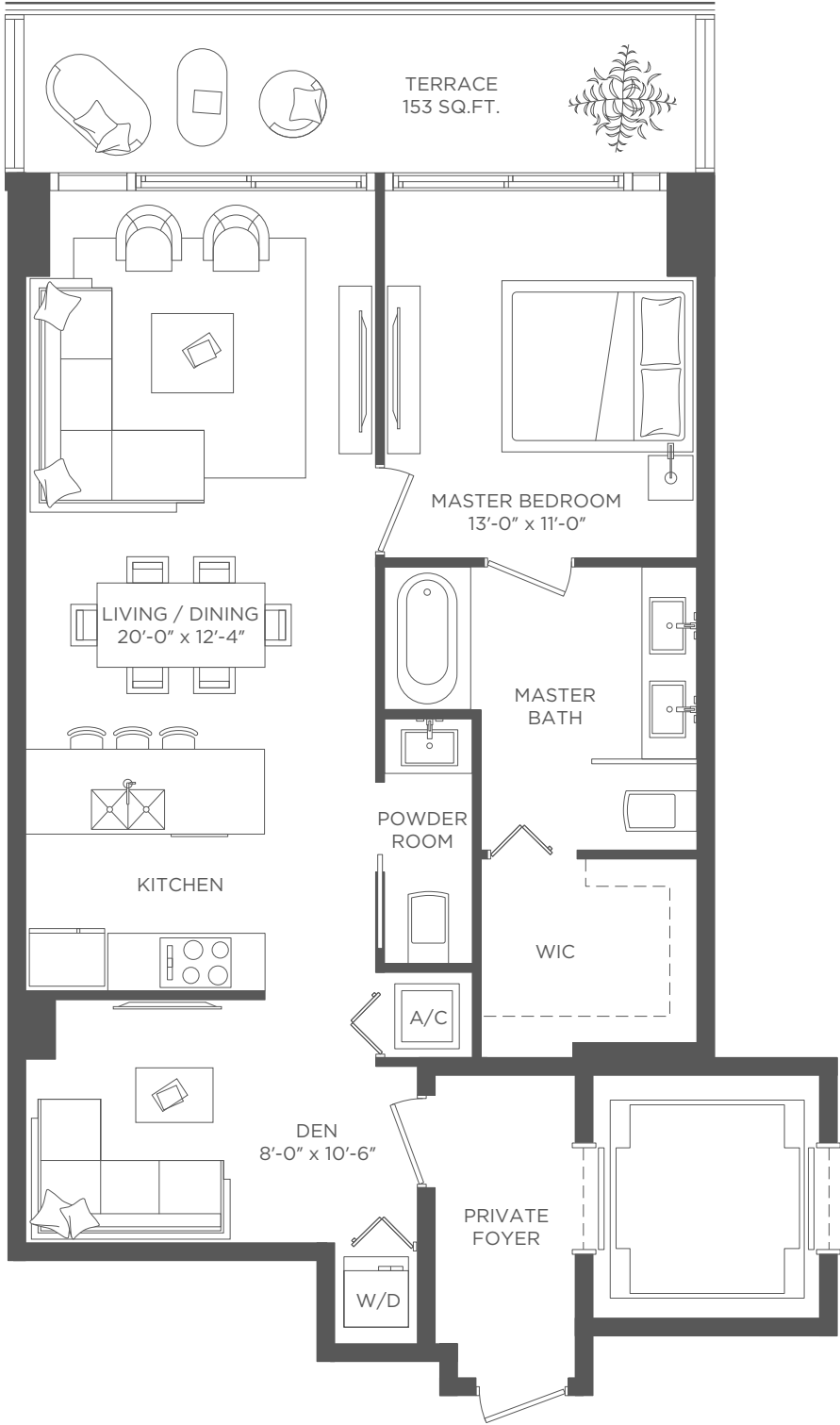
A/C INTERIOR AREA	1,075 SQ. FT.	99.87 SQ. M.
TERRACE AREA	153 SQ. FT.	14.21 SQ. M.
TOTAL RESIDENCE	1,228 SQ. FT.	114.08 SQ. M.

Each purchaser is advised that there are various methods for calculating the square footage of a Unit, and that depending on the method of calculation , the quoted square footage of a Unit in advertising materials may vary from the square footage of a Unit as stated or described in the Prospectus and the Declaration. The dimensions of the Unit shown in these floor plans have been calculated from the exterior boundaries of the exterior walls to the centerline of interior demising walls, including common elements such as structural walls and other interior structural components of the building and in fact vary from the dimensions that would be determined by using the description and definition of the "Unit" set forth in the Prospectus and the Declaration. For your reference, the area of the Unit, determined in accordance with Unit boundaries as defined in the Prospectus and the Declaration is less than the square footage reflected here. The configuration and use of space or the floor plan design may vary from that in the Prospectus and Declaration because the Developer has reserved the right in the Prospectus to make design, dimension, specification, and plan changes at any time, in the Developer's discretion, without notice to Unit buyers. Note that measurements of rooms set forth on this floor plan are generally taken at the greatest points of each given room (as if the room were a perfect rectangle), without regard for any cutouts. Accordingly, the area of the actual room will typically be smaller than the product obtained by multiplying the stated length times width. All dimensions are approximate and may vary with actual construction, and all floor plans and development plans are subject to change. The furnishings and décor illustrated are not included with the purchase of the Unit. See Prospectus for additional information regarding what is offered with the Unit and the calculation of Unit square footage and dimensions.





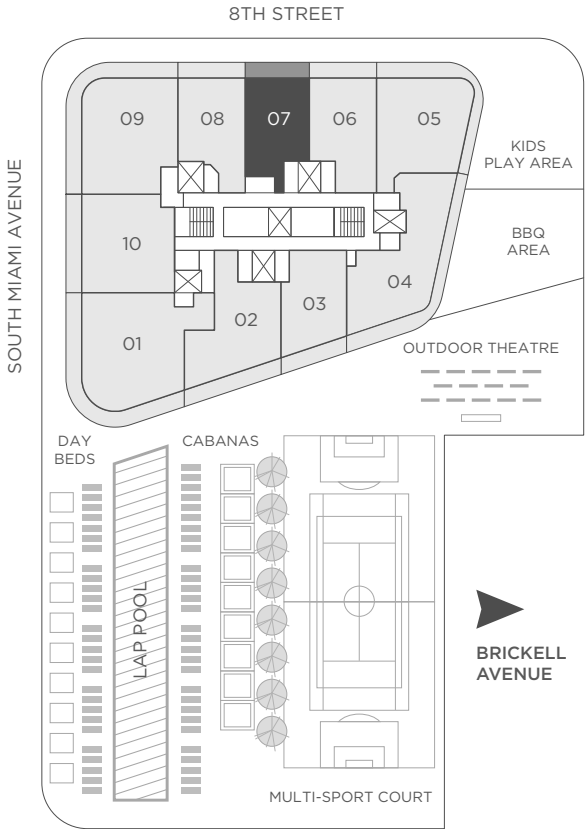
SLS LUX®  
BRICKELL



SLS RESIDENCE 07  
1 BEDROOM & DEN / 1 1/2 BATHS

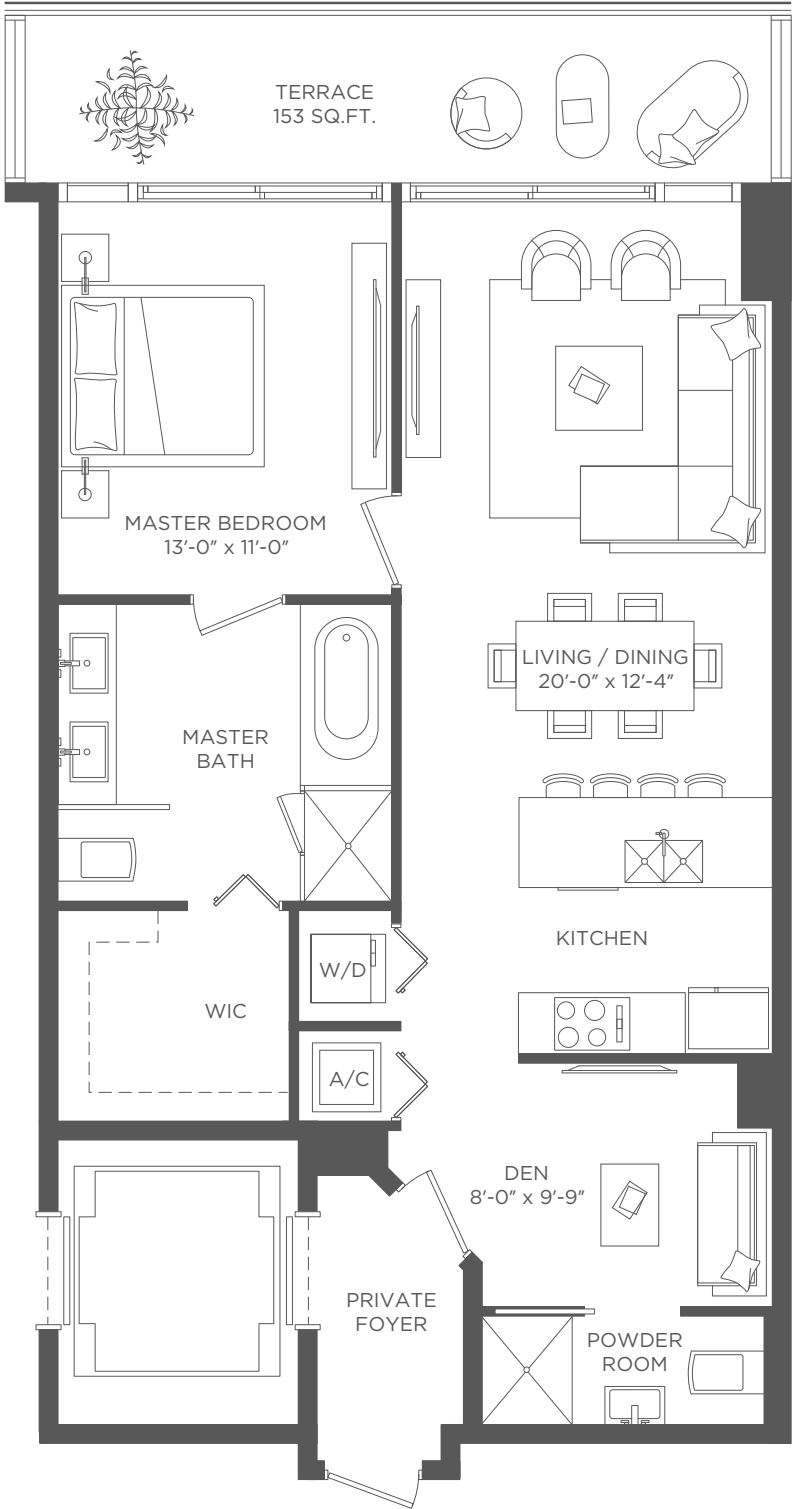
A/C INTERIOR AREA	955 SQ. FT.	88.72 SQ. M.
TERRACE AREA	153 SQ. FT.	14.21 SQ. M.
TOTAL RESIDENCE	1,108 SQ. FT.	102.93 SQ. M.

Each purchaser is advised that there are various methods for calculating the square footage of a Unit, and that depending on the method of calculation , the quoted square footage of a Unit in advertising materials may vary from the square footage of a Unit as stated or described in the Prospectus and the Declaration. The dimensions of the Unit shown in these floor plans have been calculated from the exterior boundaries of the exterior walls to the centerline of interior demising walls, including common elements such as structural walls and other interior structural components of the building and in fact vary from the dimensions that would be determined by using the description and definition of the "Unit" set forth in the Prospectus and the Declaration. For your reference, the area of the Unit, determined in accordance with Unit boundaries as defined in the Prospectus and the Declaration is less than the square footage reflected here. The configuration and use of space or the floor plan design may vary from that in the Prospectus and Declaration because the Developer has reserved the right in the Prospectus to make design, dimension, specification, and plan changes at any time, in the Developer's discretion, without notice to Unit buyers. Note that measurements of rooms set forth on this floor plan are generally taken at the greatest points of each given room (as if the room were a perfect rectangle), without regard for any cutouts. Accordingly, the area of the actual room will typically be smaller than the product obtained by multiplying the stated length times width. All dimensions are approximate and may vary with actual construction, and all floor plans and development plans are subject to change. The furnishings and décor illustrated are not included with the purchase of the Unit. See Prospectus for additional information regarding what is offered with the Unit and the calculation of Unit square footage and dimensions.





SLS LUX®  
BRICKELL

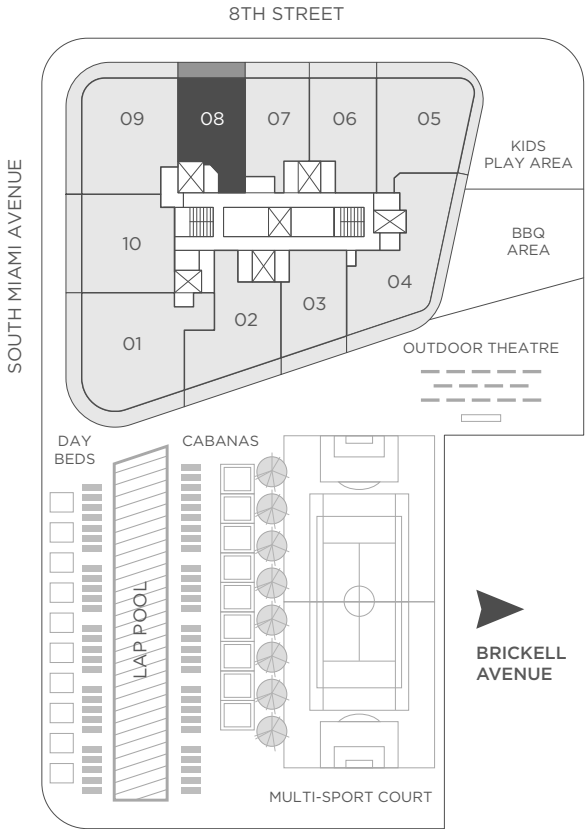


SLS RESIDENCE 08

1 BEDROOM & DEN / 2 BATHS

A/C INTERIOR AREA	1,010 SQ. FT.	93.83 SQ. M.
TERRACE AREA	153 SQ. FT.	14.21 SQ. M.
TOTAL RESIDENCE	1,163 SQ. FT.	108.04 SQ. M.

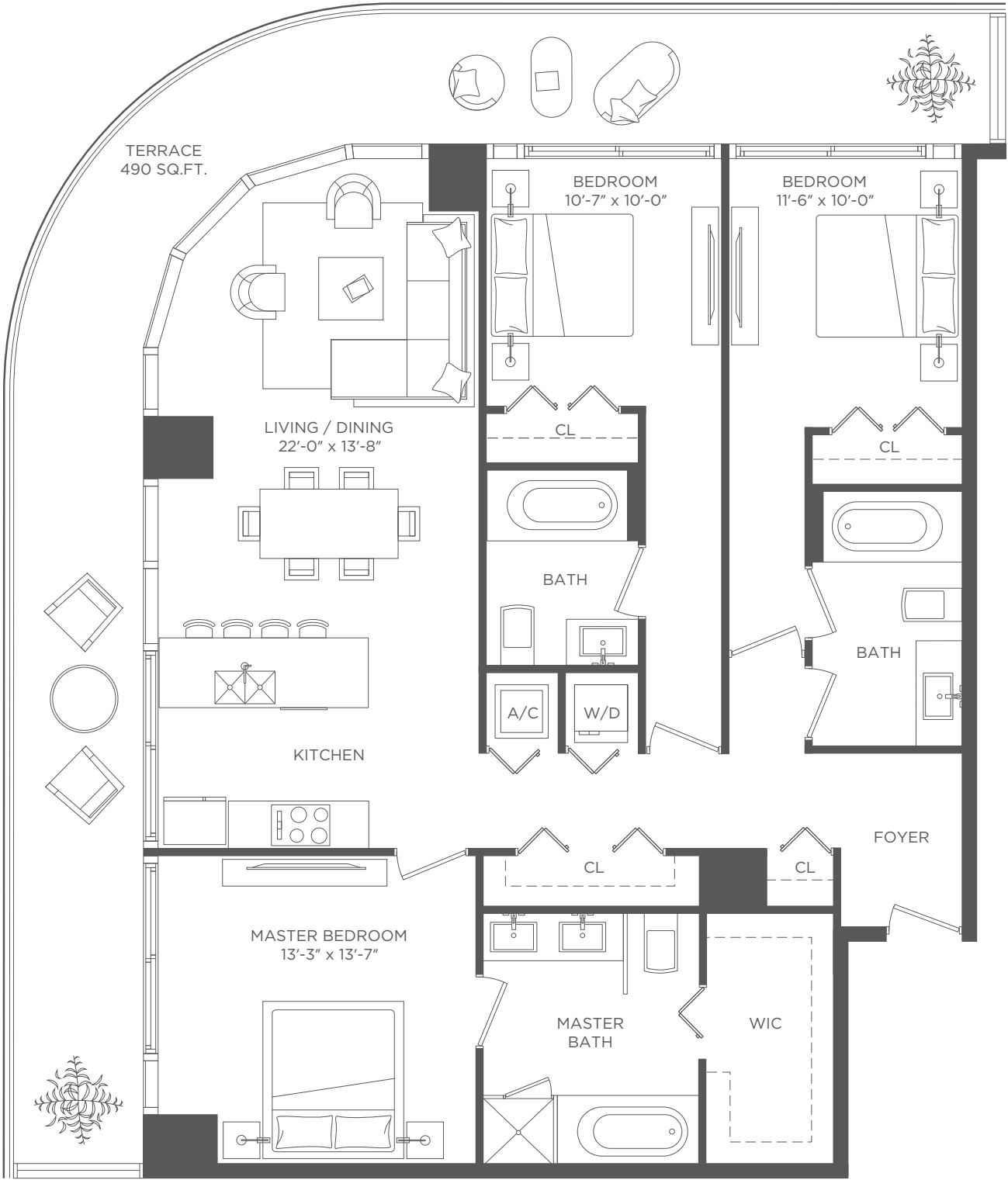
Each purchaser is advised that there are various methods for calculating the square footage of a Unit, and that depending on the method of calculation , the quoted square footage of a Unit in advertising materials may vary from the square footage of a Unit as stated or described in the Prospectus and the Declaration. The dimensions of the Unit shown in these floor plans have been calculated from the exterior boundaries of the exterior walls to the centerline of interior demising walls, including common elements such as structural walls and other interior structural components of the building and in fact vary from the dimensions that would be determined by using the description and definition of the "Unit" set forth in the Prospectus and the Declaration. For your reference, the area of the Unit, determined in accordance with Unit boundaries as defined in the Prospectus and the Declaration is less than the square footage reflected here. The configuration and use of space or the floor plan design may vary from that in the Prospectus and Declaration because the Developer has reserved the right in the Prospectus to make design, dimension, specification, and plan changes at any time, in the Developer's discretion, without notice to Unit buyers. Note that measurements of rooms set forth on this floor plan are generally taken at the greatest points of each given room (as if the room were a perfect rectangle), without regard for any cutouts. Accordingly, the area of the actual room will typically be smaller than the product obtained by multiplying the stated length times width. All dimensions are approximate and may vary with actual construction, and all floor plans and development plans are subject to change. The furnishings and décor illustrated are not included with the purchase of the Unit. See Prospectus for additional information regarding what is offered with the Unit and the calculation of Unit square footage and dimensions.







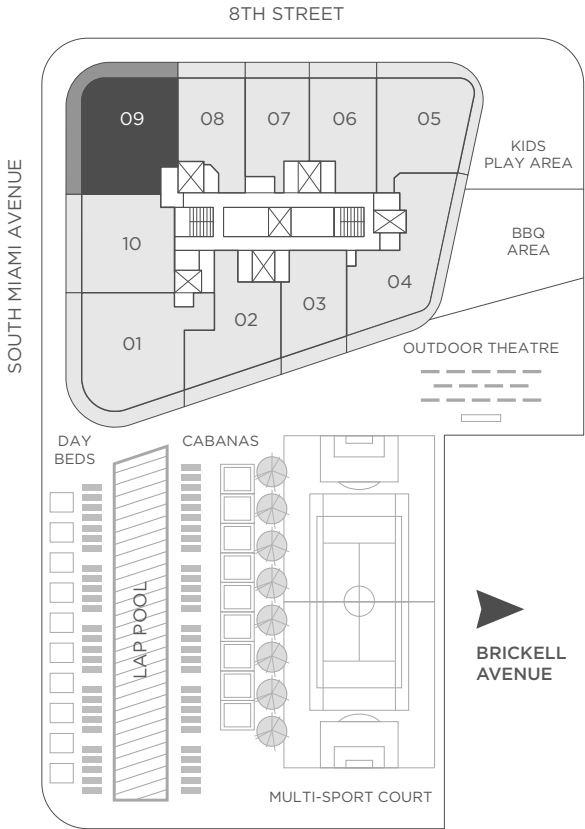
SLS LUX®  
BRICKELL



SLS RESIDENCE 09

3 BEDROOMS / 3 BATHS

A/C INTERIOR AREA	1,660 SQ. FT.	154.21 SQ. M.
TERRACE AREA	490 SQ. FT.	45.52 SQ. M.
TOTAL RESIDENCE	2,150 SQ. FT.	199.73 SQ. M.



Each purchaser is advised that there are various methods for calculating the square footage of a Unit, and that depending on the method of calculation , the quoted square footage of a Unit in advertising materials may vary from the square footage of a Unit as stated or described in the Prospectus and the Declaration. The dimensions of the Unit shown in these floor plans have been calculated from the exterior boundaries of the exterior walls to the centerline of interior demising walls, including common elements such as structural walls and other interior structural components of the building and in fact vary from the dimensions that would be determined by using the description and definition of the "Unit" set forth in the Prospectus and the Declaration. For your reference, the area of the Unit, determined in accordance with Unit boundaries as defined in the Prospectus and the Declaration is less than the square footage reflected here. The configuration and use of space or the floor plan design may vary from that in the Prospectus and Declaration because the Developer has reserved the right in the Prospectus to make design, dimension, specification, and plan changes at any time, in the Developer's discretion, without notice to Unit buyers. Note that measurements of rooms set forth on this floor plan are generally taken at the greatest points of each given room (as if the room were a perfect rectangle), without regard for any cutouts. Accordingly, the area of the actual room will typically be smaller than the product obtained by multiplying the stated length times width. All dimensions are approximate and may vary with actual construction, and all floor plans and development plans are subject to change. The furnishings and décor illustrated are not included with the purchase of the Unit. See Prospectus for additional information regarding what is offered with the Unit and the calculation of Unit square footage and dimensions.



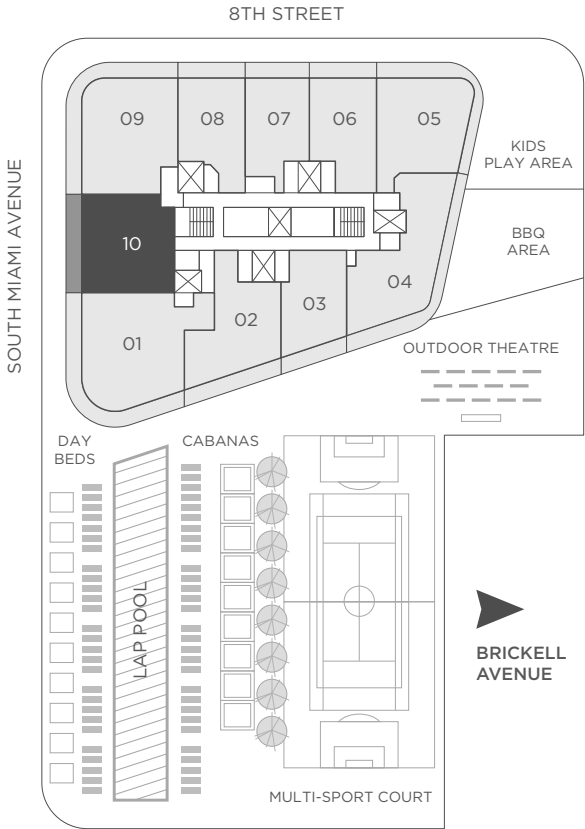
SLS LUX®  
BRICKELL



SLS RESIDENCE 10

2 BEDROOMS & DEN / 2 BATHS

A/C INTERIOR AREA	1,394 SQ. FT.	129.50 SQ. M.
TERRACE AREA	226 SQ. FT.	20.99 SQ. M.
TOTAL RESIDENCE	1,620 SQ. FT.	150.49 SQ. M.



Each purchaser is advised that there are various methods for calculating the square footage of a Unit, and that depending on the method of calculation , the quoted square footage of a Unit in advertising materials may vary from the square footage of a Unit as stated or described in the Prospectus and the Declaration. The dimensions of the Unit shown in these floor plans have been calculated from the exterior boundaries of the exterior walls to the centerline of interior demising walls, including common elements such as structural walls and other interior structural components of the building and in fact vary from the dimensions that would be determined by using the description and definition of the "Unit" set forth in the Prospectus and the Declaration. For your reference, the area of the Unit, determined in accordance with Unit boundaries as defined in the Prospectus and the Declaration is less than the square footage reflected here. The configuration and use of space or the floor plan design may vary from that in the Prospectus and Declaration because the Developer has reserved the right in the Prospectus to make design, dimension, specification, and plan changes at any time, in the Developer's discretion, without notice to Unit buyers. Note that measurements of rooms set forth on this floor plan are generally taken at the greatest points of each given room (as if the room were a perfect rectangle), without regard for any cutouts. Accordingly, the area of the actual room will typically be smaller than the product obtained by multiplying the stated length times width. All dimensions are approximate and may vary with actual construction, and all floor plans and development plans are subject to change. The furnishings and décor illustrated are not included with the purchase of the Unit. See Prospectus for additional information regarding what is offered with the Unit and the calculation of Unit square footage and dimensions.